


## APPLICATION ROUTINE

# Cyspera


Melanin Pigment Reduction

routine:




### Do not wash skin before application.

Do not wash your face before application. If necessary to wash, wait one hour before application of Cyspera on a dry and rested skin.




### 1. Apply Cyspera Cream for 15 minutes.



Once a day as part of your evening routine, apply a thin layer of Cyspera to the whole area to be treated. Leave on for 15 minutes only.


### 2. Wash off.



After 15min, cleanse your skin thoroughly with soap and water. Gently pat your face dry.



### 3. Apply a simple hydration cream



After cleansing, apply a simple hydrating cream to the treated area. Leave on over -night. Maintain your skin hydrated during the day and use a high SPF protection.



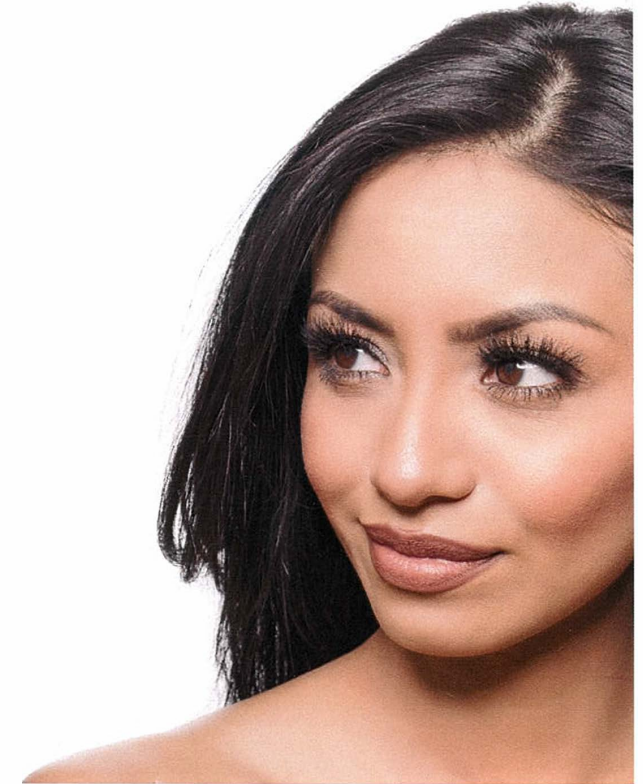
Scientis Pharma is a Swiss biotech company. Dedicated to skin pigmentation, we strive at discovering, developing and bringing to patients, novel biotech options for skin pigmentation conditions. We conduct research with world-leading scientists and clinicians in the field of skin pigmentation to provide the newest, safest and most effective products to patients with skin color concerns.

[www.scientispharma.com](http://www.scientispharma.com)

scientis  
PHARMA



scientis  
PHARMA



Forget your hyperpigmented marks  
and reclaim your confidence

